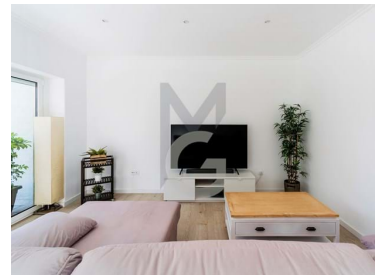




Alvalade - Apartment



3
Bedrooms

2
Bathrooms

105
Area (m²)

109
Land Area (m²)

N/A
(EUR €)

Renovated 3-beds apartment, with two terraces, Avenida de Roma, Lisbon

3-beds apartment with two terraces, right next to Avenida de Roma, Lisbon, with excellent location for those who privilege a neighborhood lifestyle, since within a walking distance there's several commercial stores and markets, various services, restaurants, schools and public transport, including the subway and train stations.

In a building with good maintenance and with two lifts, the apartment was fully renovated and has an area close to 110sqm inside and 110sqm outside, divided by two excellent terraces.

It is distributed by the living room with access to a 36sqm terrace, facing east; kitchen with white lacquered cabinets and BOSCH appliances, with access to the west 73sqm terrace; one en-suite

T +351 912373588 ² · E geral@miriamguerreiro.com
AMI 17356

¹ (Call to national fixed network) | ² (Call to national mobile network)



bedroom and two bedrooms that share the second bathroom, all with wardrobes.

Renovation made with quality, modern style and neutral colors, fits into various styles of decoration.

Furniture not included, but with possibility of being purchased.

No garage, but there is parking available in a public garage within 100m.

Property Features

- Heating
- Dishwashing machine
- Fitted wardrobes
- Thermoaccumulator
- Terrace
- Views: Urbanization view
- Double glazing
- Quiet Location
- Security door
- Solar orientation: East, West
- Renovation year: 2022
- Washing machine
- Air conditioning
- Equipped kitchen
- Proximity: Airport, Shopping, Restaurants, City, Pharmacy, Public Transport, Schools, Public Swimming Pools
- Built year: 1969
- Lift
- Electric shutters
- Central location
- Energetic certification: C
- Balcony

T +351 912373588 ² · E geral@miriamguerreiro.com
AMI 17356

¹ (Call to national fixed network) | ² (Call to national mobile network)